

PACKING/ PACKAGING AND WRAPPING SERVICES

Not only handling but also giving the best solution for your packages

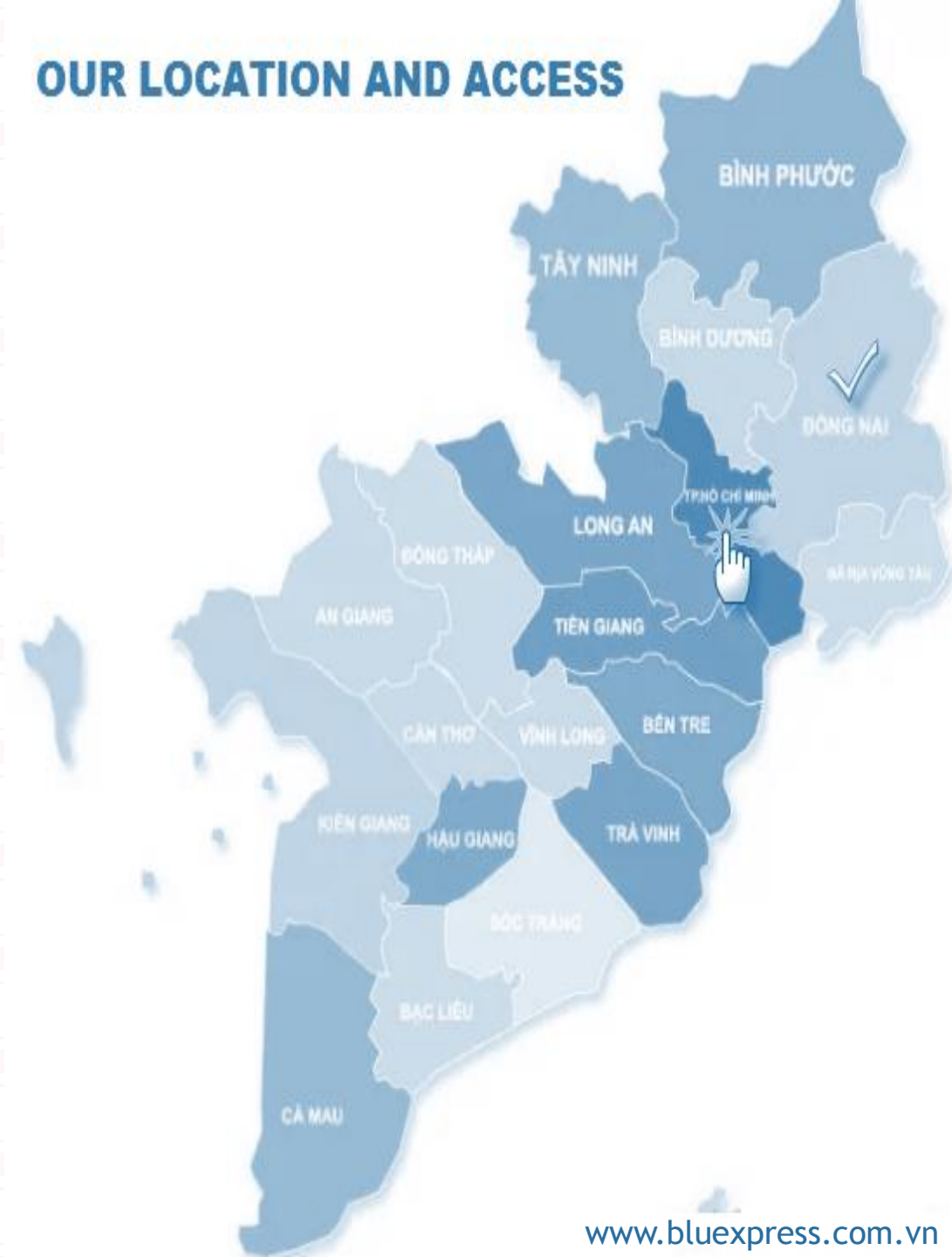


Blue Express, as the local logistics company, more than 10 years handling and supplying the services to the Manufacturing Factory in HCMC, Dong Nai, Binh Duong and Long An province. We have understood and known all our customers' requirements (both of problems and concerns) in the logistics supply chain. So packing/ packaging and wrapping services was built up and improved during 6 years. We are proud of **Our Strengths**:

- ▶ Well-experienced, skilled, and dedicated management team
- ▶ Ability to handle high value and complex cargo (as oversize, overweight,..)
- ▶ Real time visibility
- ▶ Reasonable price points

Our headoffice is located in SCSC warehouse of Tan Son Nhat Int'l Airport, HCMC, and Our warehouse is 400m2 floor space, located in Long Duc Industrial Park, Long Thanh, Dong Nai.

OUR LOCATION AND ACCESS



OUR SERVICES,

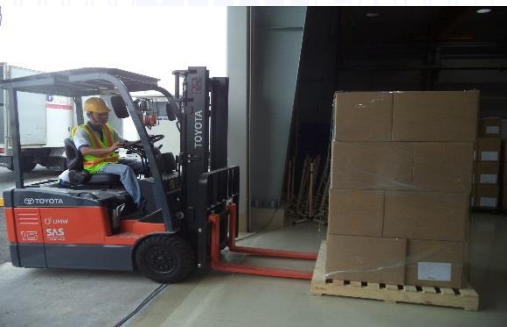
Blue Express has experience in packing/ packaging and wrapping the following types of goods:

- ✓ Bulky cargo such as door frames, rolling doors, blades of wind turbine,...
- ✓ Heavy cargo such as iron molds, bridge bearings...
- ✓ Fragile cargos such as glass doors, laboratory equipment...
- ✓ High-valued and technical goods as chillers, machines, equipments, forklift..to build and set-up the manufacturing factory

If you have any project or packing stuffs in shipping as over-size/ over-weight/ reefer/dangerous/ machinery cargo, Don't hesitate to contact us immediately, With many years of practical experience in making pallets, wooden crates, wooden boxes, wooden packaging boxes, ... and a team of enthusiastic, dynamic, professional staff along with modern machinery, produced with the best quality wood, so the products are guaranteed, and can meet the international export standards. Wooden crates are treated against termites, dried, and fumigated for units with export needs.

Let's join and refer some casestudy with us ...

▶ Case study: Exporting - LCL shipment. ...



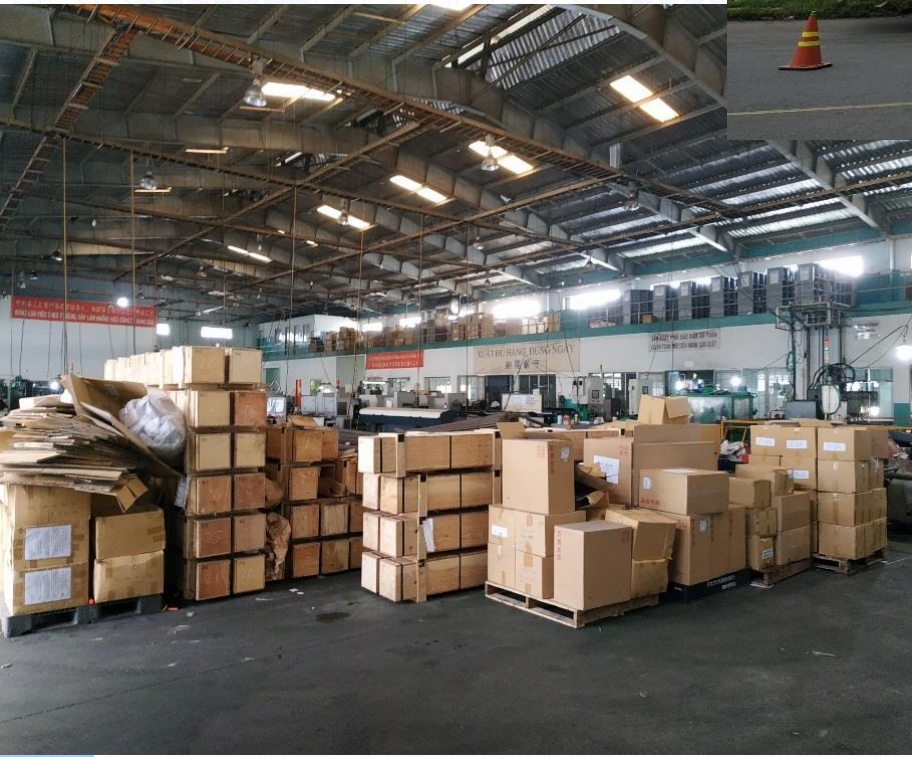
▶ Case study: Exporting - FCL shipment. ...



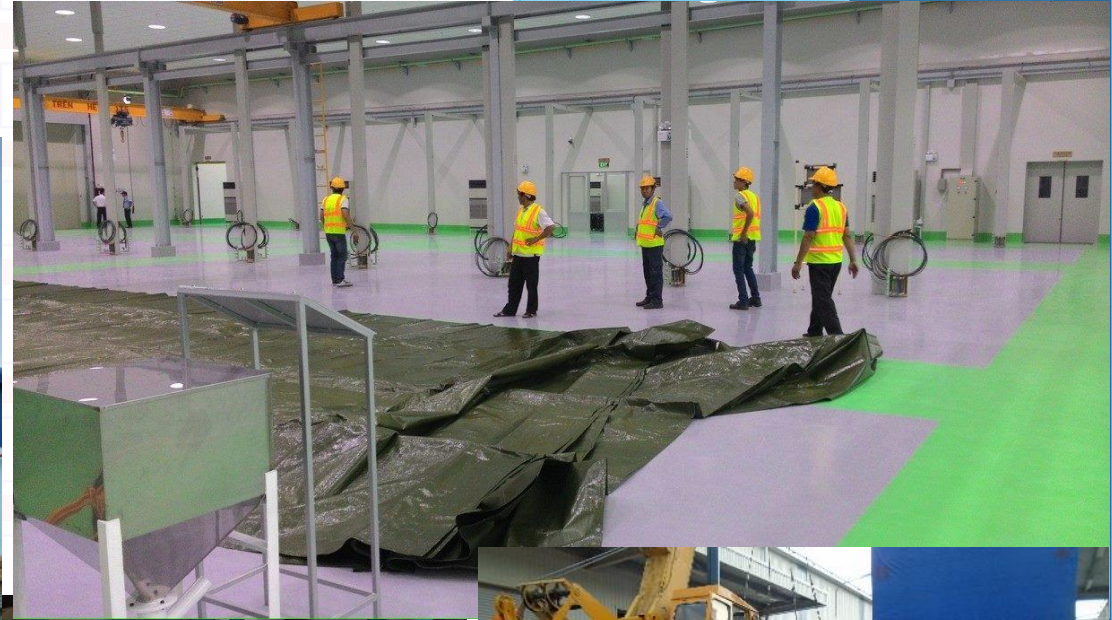
▶ Case study: Exporting - Machinery shipment. ...



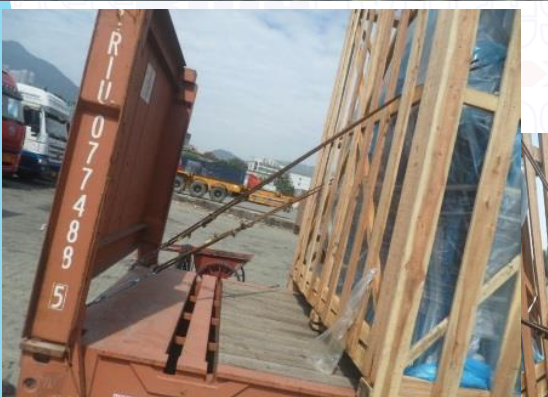
► **Case study:** Project - Move Factory from TanThuan EPE Zone to HiepPhuoc Industrial Zone...



▶ Case study: Project - Move Factory from China to Vietnam...



▶ Case study: Importing - Bulk oversize/overweight shipment. ...





C E R T I F I C A T E

This certificate is to confirm that:

NGUYEN VO NGOAI KHOA

Has attended the following workshop at TANCANG-STC:

**CARGO LASHING, DUNNAGE,
PROTECTION IN TRANSPORTATION**

Certificate number: **020/18CL**
Date of issue: 25th September, 2018

Signed:

Mr. Martinus Gerrit Voorham
Training Director



BlueExpress
Total logistics solutions

Headoffice: 30 Phan Thuc Duyen Street, Ward 4, Tan Binh District, Ho Chi Minh City, Vietnam.

- ▶ Tel : +84 8 38 453 888 (08 lines)
- ▶ Fax : + 84 8 38 453 500
- ▶ Email : admin@blueexpress.com.vn

Warehouse: Long Duc Industrial Park

- ▶ Long Duc IP, Hamlet 5, An Phuoc Commute, Long Thanh, Dongnai Province.

Please feel free to contact us:

Mr. NGUYEN VO NGOAI KHOA (Main contact)

Packing & Project Manager

- ▶ Tel : +84 938 853468/ 909 700468
- ▶ Email : khoa.nguyen@blueexpress.com.vn